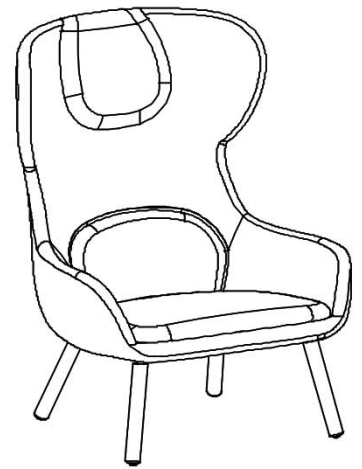
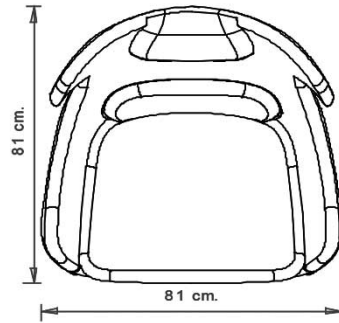
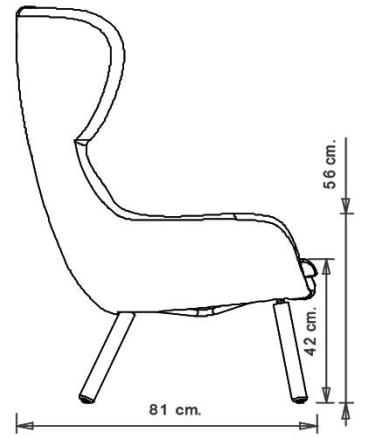
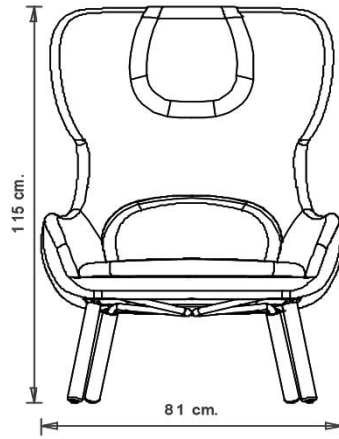


## Myra 682

### MYRA COLLECTION:

Myra 652, Myra 653, Myra 654, Myra 654B, Myra 655, Myra 656, Myra 657, Myra 658, Myra 658B, Myra 659, Myra 660, Myra 667, Myra 668, Myra 669, Myra 674, Myra 675, Myra 677, Myra 676, Myra 678, Myra 679, Myra 680, Myra 681, Myra 682, Myra 683,



Wing chair with upholstered seat and back, 4 beech wood legs.

#### WEIGHT

21,3 Kg

#### PACK

0,75 m<sup>3</sup>

#### PIECES PER BOX

1

FINISHES SEATING

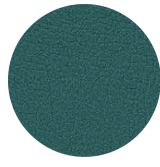
TE FABRICS



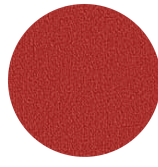
Fortis + 8 colori



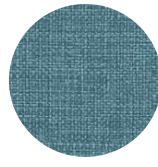
Melva  
+ 8 colors



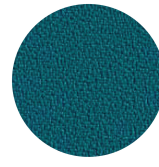
Inca  
+ 14 colors



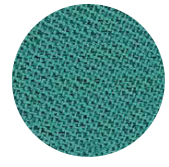
Amsterdam  
+ 8 colors



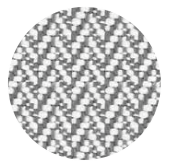
Medley Gabriel  
+ 15 colors



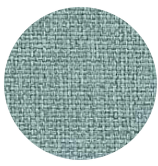
Mirage  
+ 8 colors



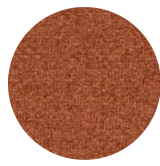
Chili Gabriel  
+ 8 colors



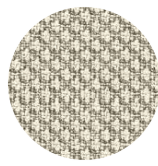
in&out  
+ 15 colors



Convert  
+ 7 colors



Fenice  
+ 8 colors



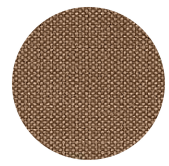
Rondo Gabriel  
+ 8 colors



Mood Gabriel  
+ 8 colors



Valencia  
+ 14 colors



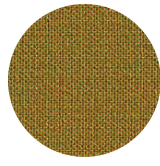
Reviva Hero  
+ 10 colors



Fabthirty  
Rubelli  
+ 8 colors



Ocean Mastrotto  
+ 15 colors



Remix 3 Kvadrat  
+ 15 colors

NOTE

Stichings available in red, rope and according to fabric colour.



---

**FRAMES**

**LE WOOD**



Beech | Honey  
stained



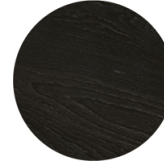
Beech | Chesnut  
stained



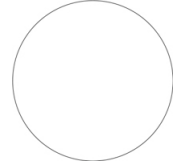
Beech | Grey stained



Beech | Dark brown  
stained



beech | Black  
stained



Beech | Stained  
according to sample

---

**USES**

coffee & restaurants, hotels, office and waiting areas,