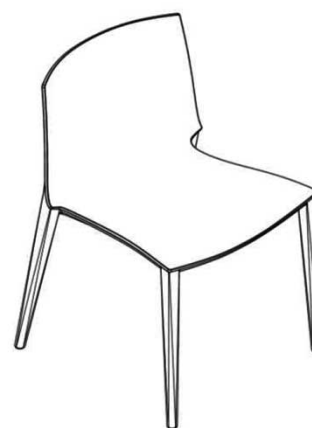
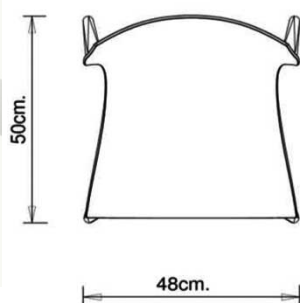
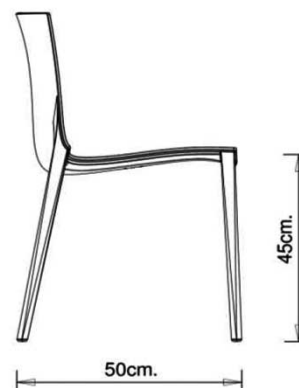
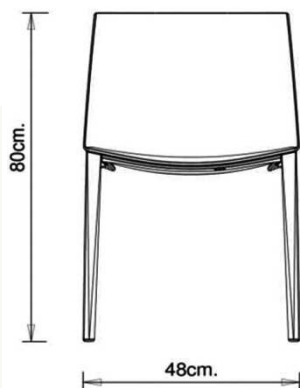


# Palau 1020

PALAU COLLECTION:  
 Palau 1020, Palau 1021,



Monobloc chair in polypropylene made using the injected airmoulding technology.

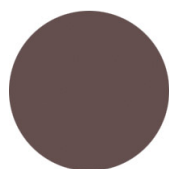
STACKABLE	WEIGHT	PACK	PIECES PER BOX
6	3,8 kg	0,31 m <sup>3</sup>	4

## FINISHES SEATING

### PP POLYPROPYLENE



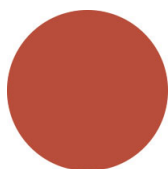
NCS S9000-N  
 Jet black  
 ≡



NCS S6502-R Clay  
 ≡



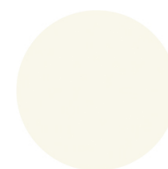
NCS S7020-G50Y  
 Olive green  
 ≡



NCS S3060-Y80R  
 Coral red  
 ≡



NCS S4020-B10G Dusty blue  
 ≡



NCS S0500-N  
 Pure white  
 ≡

## **USES**

---

coffee & restaurants, entertainment, travel, office and waiting areas, retail, outdoor,