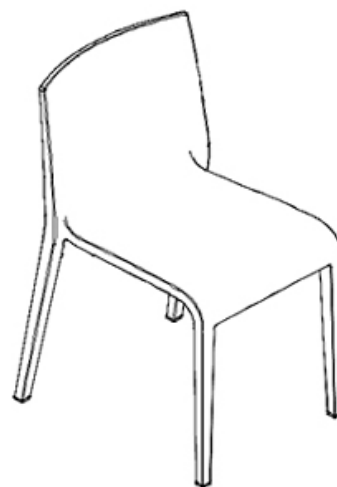
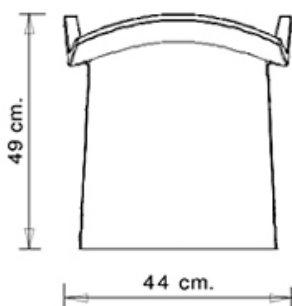
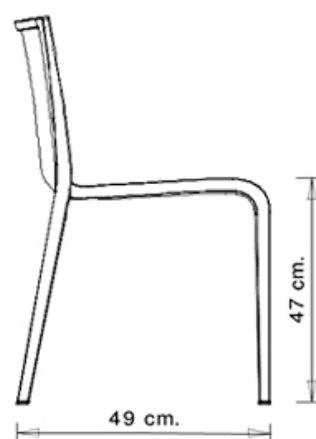
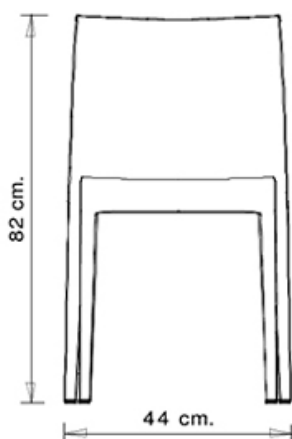


Nassau 533

NASSAU COLLECTION:

Nassau 533, Nassau 533M, Nassau 533N, Nassau 534, Nassau 534N, Nassau 537B, Nassau 537, Trolley 536,



Monobloc chair in polypropylene made using the injected airmoulding technology.
Nassau 533 in the fire retardant version is available only in Pure white RAL 9010.

STACKABLE

8

WEIGHT

4,2 kg

PACK

0,35 m³

PIECES PER BOX

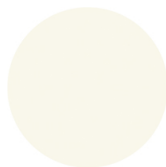
4

FINISHES SEATING

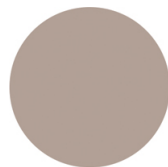
PP POLYPROPYLENE



NCS S7020-G50Y
Olive green



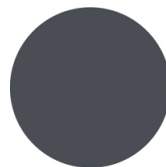
NCS S0500-N
Pure white



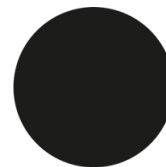
NCS S4005-Y50R
Turtle-dove



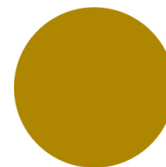
NCS S4005-B20G
Squirrel grey



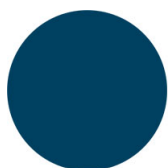
NCS S7502-B
Anthracite grey



NCS S9000-N
Jet black



NCS S3060-Y
Curry



NCS S6030-B
Capri blue



NCS S3050-G60Y
Fern green



NCS S4040-R
Marsala



NOTE

Shell in **olive green** is made of **100% recycled polypropylene** from industrial waste.

CERTIFICATIONS

- > ANSI/BIFMA X5.1-2011 - Par.11. Prove di fatica sulla seduta (25/03/16)
- > ANSI/BIFMA X5.1-2011 - Par.12. Stabilità (30/03/16)
- > ANSI/BIFMA X5.1-2011 - Par.16. Prove di fatica sullo schienale (13/04/16)
- > ANSI/BIFMA X5.1-2011 - Par.18. Sforzo statico sulla gambe (18/04/16)
- > ANSI/BIFMA X5.1-2011 - Par.6. Sforzo statico sullo schienale (11/03/16)
- > ANSI/BIFMA X5.1-2011 - Par.8. Caduta di un peso (11/03/16)

USES

coffee & restaurants, office and waiting areas, outdoor,